

S series Low Pressure Spin-ons

Featuring Hy-Pro G7 Dualglass high performance filter element technology



APPLICATIONS

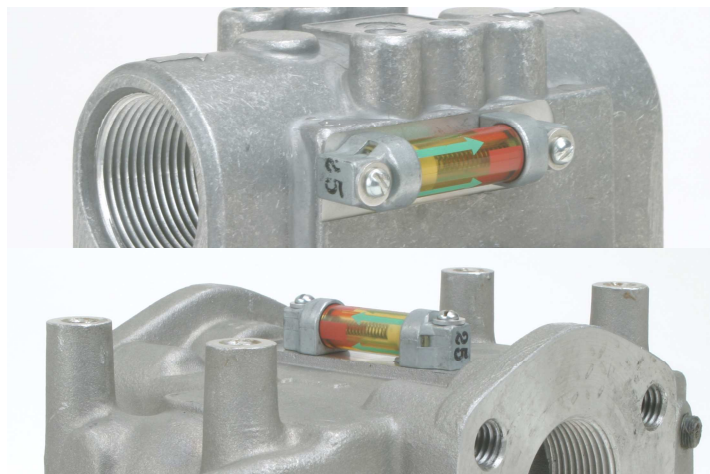
- Hy-Pro Low pressure S series filters are ideal for installation on the return line to remove contaminate ingested or generated by the system. Functions include off-line filtration (kidney loop or filter cart) and some suction applications.
- Automotive manufacturing/assembly machine tools.
- Mobile applications such as waste haulers & transit .
- Filter carts and filter panels.
- Power unit return line/suction.

FEATURES, BENEFITS, ADVANTAGES

DFE rated elements	G7 Dualglass elements are DFE rated to assure performance even when exposed to the toughest conditions that hydraulic systems can generate (See DFE for details).
Low housing pressure drop	Unique internal flow paths provide low resistance to flow. (Low pressure drop)
True Differential Pressure gage	Visual differential bar gage makes element service decision easier than typical pressure gages.

PRODUCT SPECIFICATIONS

Operating Pressure	S75 200 psi (14 bar) max S75D 200 psi (14 bar) max S76 200 psi (14 bar) max
Flow rate	S75 50 gpm (186 lpm) S75D 100 gpm (373 lpm) S76 18 gpm (67 lpm)
Design safety factor	2.5:1
Element collapse	100 psid (7 bar)
Assembly material	Head: Aluminum Canister: Steel
Fluid compatibility (ISO 2948)	Compatible with all petroleum, based oils, High Water Based, oil/water emulsion, and specified synthetic fluids with Fluorocarbon or EPR seals (call factory)
Bypass setting	25 psid (1.77 bar) standard see reverse for other options
Weight (w/element)	S75 single 5.5 lbs S75 double 12 lbs S76 single 2.3 lbs
Temperature rating	Nitrile -40°F(-40°C) ~ 225°F (107°C) Viton -15°F(-26°C) ~ 275°F(135°C)



HIGH PERFORMANCE FILTER ELEMENTS - THE HEART OF A FILTER

Dynamic Filter Efficiency (DFE) Testing

Revolutionary test methods assure that DFE rated elements perform true to rating even under demanding variable flow and vibration conditions. Today's industrial and mobile hydraulic circuits require elements that deliver specified cleanliness under ALL circumstances. Wire mesh supports the media to ensure against cyclical flow fatigue, temperature, and chemical resistance failures possible in filter elements with synthetic support mesh. Contact your distributor or Hy-Pro for more information and published articles on DFE testing.

Media Options

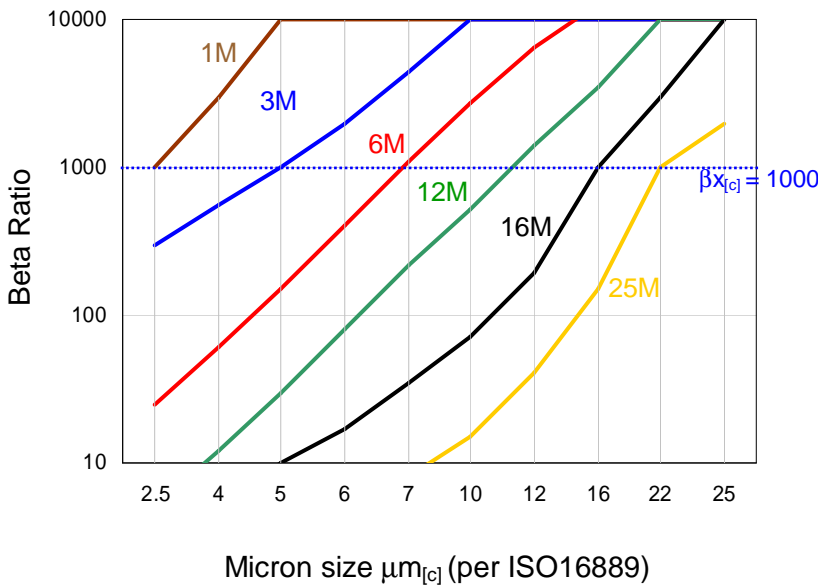
Through extensive testing we have developed media choices to handle any application. Options include G7 Dualglass, Dynafuzz (stainless fiber), and Wire mesh (stainless).

Fluid Compatibility

Petroleum based fluids, water glycol, polyol ester, phosphate ester, high water based fluids and many other synthetics. Contact us for seal material selection assistance.

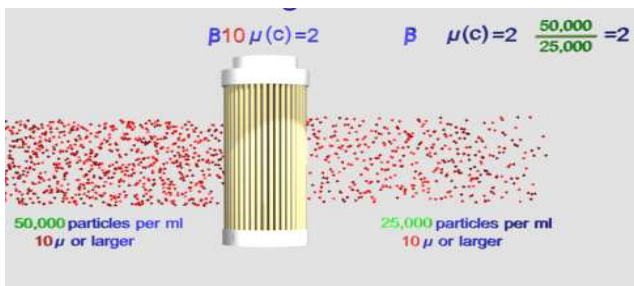
FILTER MEDIA SPECIFICATIONS

Glass Media Code Filtration Efficiency (Beta Ratio) vs Micron Size

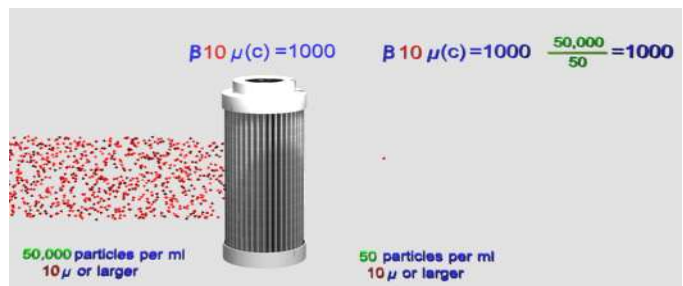


code	media description
A	"G7 Dualglass" high performance glass media combined with water removal scrim. $\beta x[c] = 1000$ ($\beta x = 200$)
C	Nominally rated "Cellulose" fiber media $\beta x[c] = 2$ ($\beta x = 2$)
M	"G7 Dualglass" is our latest generation of DFE rated, high performance glass media for use in all hydraulic fluids. $\beta x[c] = 1000$ ($\beta x = 200$)
W	Stainless steel "Wire mesh" media

Typical cellulose media performance



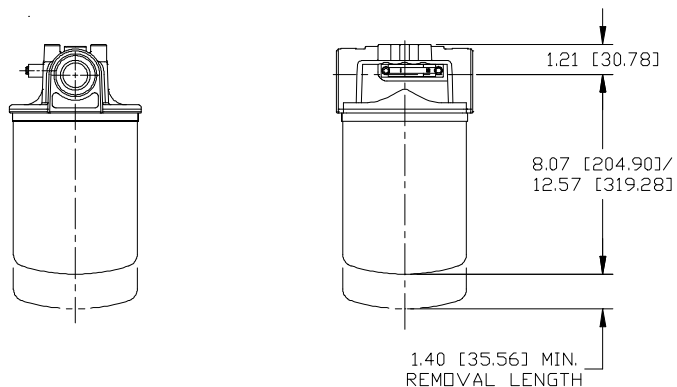
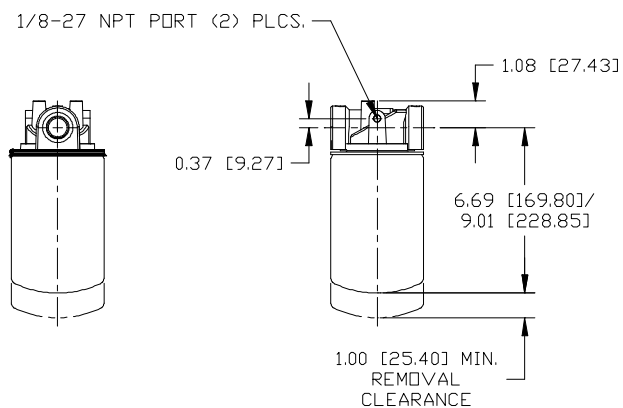
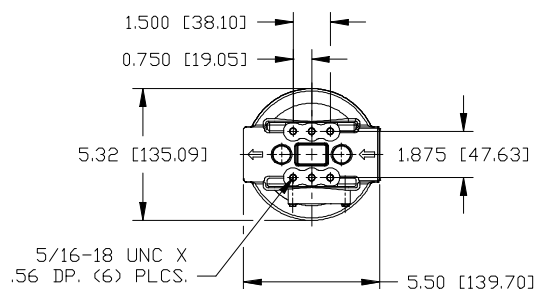
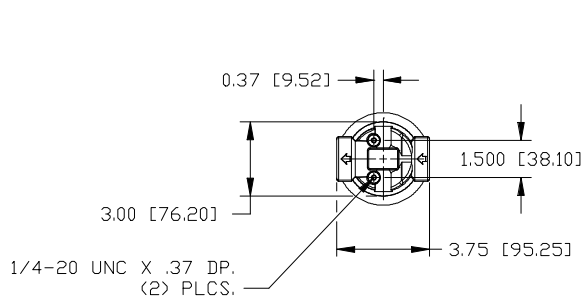
Hy-Pro G7 Dualglass media performance



S76 INSTALLATION DRAWING

S75 INSTALLATION DRAWING

For more detailed or full-sized drawings contact Hy-Pro Filtration



S75D INSTALLATION DRAWING

